

Nebraska Wesleyan University Theatre

A photograph of two performers on a stage. They are wearing black top hats with red bands, black fishnet gloves, and black fishnet stockings. They are also wearing red and black patterned jackets over black tops. They are both smiling and have their arms outstretched. The background is dark with some blurred figures. The floor has a blue and yellow pattern.

# EMBRACE

your art.

# Act I: OPPORTUNITY



The Mousetrap

Theatre opportunities come early and often at Nebraska Wesleyan University.

We attract talent from all over the country by providing **MORE OPPORTUNITIES** to act, direct, design, sing, manage and build. Those experiences start in your first year and by the time you graduate, you'll take a full resume into the professional world.

NWU Theatre is recognized **REGIONALLY** and **NATIONALLY**. College Factual currently ranks NWU high in these areas:

- > Acting
- > Musical Theatre
- > Directing
- > Design and Technical Theatre



# Theatre degrees at NWU

NWU offers theatre degrees in seven areas.

## Bachelor of Fine Arts

### ACTING

Develop your acting skills in the classroom and in productions. Gain stage experience with an annual performance schedule that includes 8-10 faculty-directed and more than 20 student-directed productions.

Few programs in the country can match the number of acting opportunities NWU provides each year.

### MUSICAL THEATRE

Our well-rounded musical theatre performers sing, act and dance. Most universities produce a musical once every two or three semesters. We produce three to five each year.

The experience you'll build here matches what others may only reach at the graduate level.

### DIRECTING

We're one of the few schools to offer a BFA in directing. NWU positions you to direct as soon as your sophomore year. Work closely with faculty directors as members of the production team and in stage management. Then take the director's chair with the skills to bring your vision to the stage.

NWU offers four levels of directing coursework as well as supporting courses in everything from script analysis to stage combat.

### THEATRE DESIGN AND TECHNOLOGY

NWU develops your technical and design skills. Work with an exciting mix of faculty and guest designers. Learn to design and assemble the sets, lighting, props, sound, makeup and costumes that bring the story to life.



### THEATRE ARTS

Explore multiple interests with this build-your-own degree option. It gives you flexibility few other BFA programs can match. Combine theatre design with art history, acting with psychology, or stage management with business administration. Give yourself the skills and experiences you need to reach your career goals in professional theatre.

## Bachelor of Arts

### THEATRE

The Bachelor of Arts in theatre is a traditional degree designed to give you a broad knowledge of theatre. You can use that base to pursue graduate study or a career in professional theatre. Students use their cultural understanding, aesthetic sense and creative skill to pursue work in a variety of fields, including law, ministry and education.

The Bachelor of Arts in theatre is a popular choice for students who wish to double major.

### THEATRE ARTS EDUCATION

If you want to teach theatre arts in a secondary school, then this BA program is for you. This program leads to a supplemental endorsement in secondary theatre education and must be coupled with a primary endorsement in another subject. Build experience in all areas you'll supervise as a theatre educator: acting, directing, costuming, scenography, playwriting, theatre history and management.

# A deep lineup

Our production volume is the main reason so many talented artists choose NWU Theatre. Compare our performance lineup with any other program. Few schools can match what we do, year in and year out.

## Recent NWU productions

### MUSICAL THEATRE

- > American Idiot
- > Elf: The Musical
- > Fun Home
- > Hello, Dolly!
- > Into the Woods
- > The Prom
- > Seussical

### SHAKESPEARE

- > As You Like It
- > Macbeth
- > Romeo and Juliet
- > Twelfth Night

### CLASSIC TO MODERN DRAMA

- > The Curious Incident of the Dog in the Night-Time
- > Sophocles' Electra
- > Eurydice
- > The Mousetrap
- > She Kills Monsters
- > Three Sisters
- > The Squirrels
- > The Wolves

Find a complete list at [theatre.nebrwesleyan.edu](http://theatre.nebrwesleyan.edu).



Each year,  
NWU Theatre  
produces on  
average:

- > **3 TO 5 MUSICALS**
- > At least one **SHAKESPEARE** production
- > An eclectic mix of **COMEDY, DRAMA** and **WORLD PREMIERES** by respected names and new playwrights.

Eurydice



### THE STAGE IS YOURS

NWU gives you more opportunities to do the work you love on a variety of stages. Perform outdoors, direct in the lab or design for the mainstage.

newly renovated McDonald Theatre



Blanke Costume Library



Lincoln's Railyard

## Finest facilities

### ELDER THEATRE CENTER RENOVATIONS

New McDonald Theatre stage, seating, lobby, box office, lighting and sound systems

### MILLER LAB THEATRE

Maximum flexibility for a wider range of performances

### COSTUME AND PROP LIBRARIES

The Great Plains' largest collections

### STUDIO THEATRE

Converted storefront with quality dance and performance spaces

## Right city

Lincoln, Neb., is both a theatre destination and a springboard for creative careers. NWU Theatre's reputation puts you at the heart of this city's supportive arts community.

Lincoln's thriving downtown is just 10 minutes from campus. NWU and Lincoln connect you to exciting internships, a friendly atmosphere and excellent parks and trails.

## Greater reach

Nebraska Wesleyan's emphasis on internships and study abroad expands your opportunities beyond campus. Students have recently interned at Disney, Second City and the Goodman in Chicago. They've also studied theatre in Argentina, Greece, France and at Shakespeare's Globe in London.

# Act II: PREPARATION

NWU Theatre does more than offer you opportunities. We prepare you to make the most of them.

Our pre-professional BFA programs give you the tools you need to enter professional theatre immediately. More than a stepping stone to an MFA program, NWU Theatre is your LAUNCH PAD to the theatre industry.



# Top professors

NWU Theatre professors treat the stage as your laboratory—a space where you put your learning into action. They're practicing artists and great teachers who know how to mentor, coach, challenge and motivate you.



*"Nebraska Wesleyan provides more quality opportunities to train preprofessional artists than you will see elsewhere."*

*Tafea Bloch*

assistant professor of musical theatre



*"Our theatre students emerge with a portfolio of work that will help launch their careers in the professional world."*

*Elizabeth Ennis*

assistant professor of theatre-costume design



*"We want to place theatre students in a production their first semester, so they can apply what they're learning in the classroom right away."*

*Ryan Kathman*

assistant professor of acting and directing



## Broad foundation

NWU connects you to every side of professional theatre, from writing scripts and designing sets to running lights and operating the box office. Your experience here will expose you to well over 100 performance pieces.

Your Nebraska Wesleyan education will reach beyond the stage. At NWU, you weave outstanding theatre education together with valuable lessons in the humanities, the social and natural sciences, and more.

Everything you do here plays a part. Your knowledge of history, culture and psychology will give you a richer understanding of the characters you play. Use your knowledge of business to sustain an arts organization. Apply those networking skills to your auditions. At NWU, our entire education comes together to make you a stronger artist.

# Industry connections

NWU Theatre gives you rare access to successful theatre professionals. We host multiple guest artists to work directly with you.

They give you fresh insights—and valuable practical know-how.

You can use their expertise to prepare your plan for entering the industry. Practice your auditions, seek advice and strengthen your network for future opportunities. You will immediately apply their expertise to your work.

## RECENT GUEST ARTISTS INCLUDE:

---

**Kally Duling** ('06), Broadway actor

---

**Bill Gordon**, SAFD fight director and stage combatant

---

**Sam Hartley**, Broadway actor

---

**Rachel Hoffman**, casting director, The Telsey Company

---

**Emily Kinney** ('06), Broadway actor, singer, songwriter, performer

---

**Michael Kushner**, actor, photographer, marketing pro, author

---

**Kailey Marshall**, writer, composer

---

**Isabelle McCalla**, Broadway actor (*The Lion King*, *Hercules*, *The Prom*)

---

**Kila Packett** ('99), commercial and stage actor

---

**Kathy Perkins**, lighting designer

---

**Aaron Phillips**, actor, voice-over actor

---

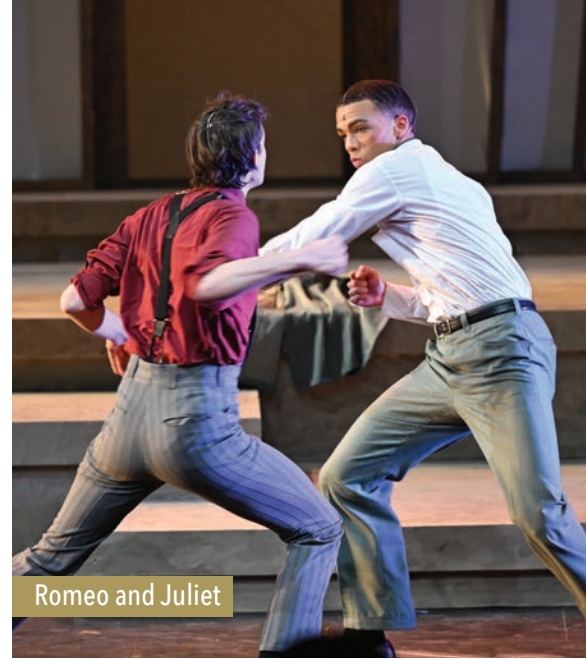
**Lawrence Stallings**, Broadway performer (*Book of Mormon*)

---

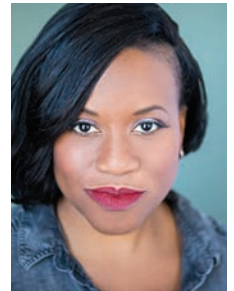
**Jenna Winnett**, agent, Bowles, Winnett, and Assoc.

## NWU GOES NATIONAL:

Faculty-led trips to New York and Chicago connect students directly with actors, directors, designers, talent managers and other industry professionals.



*"It's an absolute must that students see the real business of show business. When NWU students work with guest artists, they learn the right way that dreams can come true, no matter where you're from. Take it from me—a Nebraska girl with big dreams!"*



*Q Smith*

guest artist,  
Broadway performer,  
"Come From Away"





A vibrant stage performance featuring several performers. In the foreground, a young man is kneeling, smiling, wearing a white shirt with a colorful patterned vest and patterned pants. Behind him, a group of performers, including a woman in a sequined, rainbow-colored outfit, are holding up a large, flowing rainbow flag. The background is dark with purple and blue stage lighting. The overall mood is celebratory and joyful.

# Act III: SUCCESS

We're proud of our alumni across the industry—succeeding on Broadway, in film and TV and comedy venues, at centerstage and behind the scenes, on cruise ships and in schools across the country.

They leave NWU Theatre with the tools they need to immediately begin work in the performing arts industry.

# Culture of success

NWU equips you with the knowledge, experience, versatility and grit you need to thrive in the performing arts industry.

*"Nebraska Wesleyan gifted me with the knowledge I needed in all aspects of theatre. My mentors pushed me to keep learning and never get too comfortable. (You never know what opportunity is out there waiting for you!) I learned to walk into any situation with confidence in myself and in my training."*

*Theresa  
Chambers ('22)*

Coterie Theatre  
Kansas City, Mo.



*"NWU helped me become versatile and efficient in our craft. Nebraska Wesleyan is where accessible opportunities will grow your confidence."*

*Dio Raquel ('23)*

lighting supervisor  
Signifcant  
Productions, Inc  
Orlando, Fla.



*"This program helped me so much with figuring out the kind of theatre artist I wanted to be. They did a fantastic job of pointing me in the right direction to find jobs."*

*Drew  
Sinnard  
('23)*

Playhouse on  
the Square  
Memphis, Tenn.



*"The sheer number of opportunities at NWU gave me a full resume. Nothing compares to the professionalism and work ethic the program instills—which are arguably the most important factors in being a working actor."*

*Piper  
Monson  
('23)*

Annleigh in NYU's  
We Are the Tigers  
New York, N.Y.



# BFA audition and interview process

Your talent, academic ability and potential for success are the keys to your admission to Nebraska Wesleyan University's theatre program. We're selective so you can work alongside the best talent in small classes and have maximum opportunities to succeed.

Prospective students interested in these programs need to apply, prepare and share materials to be considered for admission. The audition process is free. NWU Theatre distributes scholarship offers by June 1.

## Pursue NWU Theatre in 3 steps.

### 1 APPLY TO NEBRASKA WESLEYAN FOR FREE AT [nebrwesleyan.edu/apply](http://nebrwesleyan.edu/apply).

We also accept the Common App.

### 2 PREPARE YOUR MATERIALS.

#### BFA in Acting

- > A resume
- > A photograph (we prefer headshots, but will accept any close-up)
- > Two or three contrasting monologues totaling about three minutes, ideally selected from both modern and classic plays; 20-30 lines of Shakespeare or his contemporaries encouraged but not required.

#### BFA in Musical Theatre

- > A resume
- > A photograph (we prefer headshots, but will accept any close-up)
- > A 45-90 second dance video
- > A one-minute monologue from a published play
- > Two contrasting 16-32 bar cuts from Broadway musicals (one pre-1980s and one contemporary)

#### BFA in Design and Technology, Directing, or Theatre Arts

- > A resume
- > Examples of your work in photographs, prompt-scripts, slides or drawings of productions
- > Examples of related skills (e.g. painting, drawing, sewing, handwork, woodworking, etc.)
- > Directors should include a 1-2 page essay describing a directorial concept for a prospective or realized production

### 3 SUBMIT YOUR MATERIALS.

Contact Ryan Kathman, assistant professor of theatre, at [rkathman@nebrwesleyan.edu](mailto:rkathman@nebrwesleyan.edu) or 402.465.2128 to coordinate arrangements.

#### > Visit NWU.

Audition and interview for free on campus between September and April. Please plan your visit two weeks in advance and bring materials with you. If needed, we will provide you an accompanist. Visiting campus is the best way to experience NWU Theatre. We can also arrange a Zoom audition for you. Or attend a **BFA Audition Day on Saturday, November 23, 2024 or Saturday, February 1, 2025.**

#### > Join us for Chicago Unified Auditions, February 3-5.

Schedule an audition with one of our faculty members at Palmer House Hilton in downtown Chicago. Please provide your own musical accompaniment.

#### > Go online.

Go to [getacceptd.com/nebrskawesleyan](http://getacceptd.com/nebrskawesleyan) and upload the necessary materials. Please include an intro video stating your name, the pieces you'll perform, and something you'd like us to know about you that's not on your resume.



Elf: The Musical

*Additional material may be requested.*



The Hello Girls

# CONNECT

with NWU Theatre.

[theatre.nebrwesleyan.edu](http://theatre.nebrwesleyan.edu)

Nebraska Wesleyan University Admissions  
5000 Saint Paul Avenue  
Lincoln, NE 68504  
402.465.2218  
[admissions@nebrwesleyan.edu](mailto:admissions@nebrwesleyan.edu)



#NWUtheatre

